

Underground electro-mechanical operator

for residential swing-leaf gates with single-leaf width of 3.50 m and max weight of 500 kg
See graph on page 65

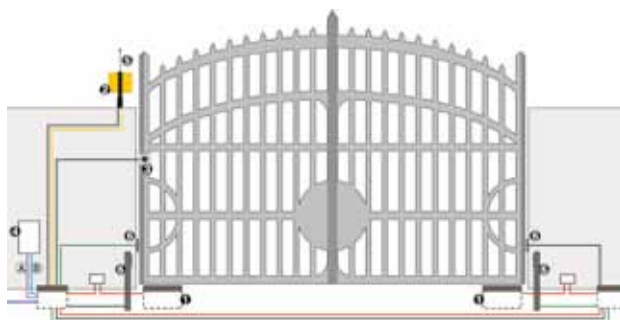


- Invisible operator.
- Access to the operator is possible without removing the leaf.
- Protection class IP 67.
- Maximum anti-crushing safety thanks to the exclusive electronic device in the 452 MPS - 455 D unit.
- Non reversing.

DIMENSIONS AND TECHNICAL SPECIFICATIONS OF 770

	770 SLOW	770
Reduction ratio	1:1418	1:1418
Power supply voltage	230 Vac (+6%-10%) 50 Hz	
Electric motor	900 r.p.m.	1400 r.p.m.
Absorbed power	300 W	380 W
Absorbed current	1.3 A	1.7 A
Thermal protection on motor winding	140 °C	
Max traction thrust force	250 Nm	330 Nm
Angle speed	4°/sec	6°/sec
Type and frequency of use at 20 °C	S3 - 30%	
Leaf max. opening angle	100° (140° and 180° with optional kit)	
Leaf max width	3.5 m (110°), 3 m (180° with optional opening kit), 2.5 m (140° with optional opening kit)	
Weight	12 kg (14 kg with carrier case)	
Protection class	IP 67	
Operator dimensions	360x150x140 mm	
Operating ambient temperature	-20 °C to +55 °C	
Carrier case dimensions	430 x 307.5 x 214 mm	

EXAMPLE OF A TYPICAL INSTALLATION



■ (A) Low voltage cabling

- 3 cables 3x0.50
- 1 cable 2x0.50

■ (B) Power cabling (230 V)

- 2 cables 3x1.50+T
- 1 cable 2x1.5+T
- 1 cable 2x1.5

N.B.: Cable sections in mm²

Ref.	Q.ty	Description	Item code	Price (euro)
1	2	Operators 770	106752	
4	1	Control board 452 MPS	790916	
4	1	Enclosure mod. E	720119	
	2	Carrier cases with key-operated release system	490065	
5	1	Receiver RP 433 SLH	787824	
	1	Two-channel transmitter XT2 433 SLH	787003	
2	1	Flashing lamp FAACLIGHT	410013	
6	2	Pair of photocells SAFEBEAM	785165	
6	2	Aluminium columns for SAFEBEAM	401039	
	2	Foundation plates for columns	737637	
5	1	Key-operated push-button T10E	401019001/36	
	3	Plastic enclosure to be walled in	720086	
TOTAL				

Notes

IMPORTANT: The configuration does not include the safety devices (i.e.: active or passive safety edges) that are to be determined according to the specific "risk analysis" of each installation (Ref.: UNI-EN 12445 and 12453 European Standards).

- The indicated price does not include the installation costs and the expenses for masonry, electrical and metalwork preparations.

770

Model	Use			Control unit	Item code	Price (euro)
	Single-leaf max. width (m)	Max. weight (kg)	Use frequency (cycles/hour)			
770	2 (3.5 with electric lock)	500	20	Not included	106752	
770 Slow	2 (3.5 with electric lock)	500	30	Not included	106754	

The 770 operator package includes: an electro-mechanical operator, transmission leverage, a thrust capacitor 12.5 µF 400 V.

The carrier case package includes: a carrier case, a cover in stainless steel, a leaf support bracket with a lever release system, two release keys and installation accessories.

CONTROL UNITS



Control board 455 D
Technical specifications page 149

Item code 790917
Price (euro) _____

Enclosure mod. L
for control boards

Item code 720118
Price (euro) _____



Control board 452 MPS
Technical specifications page 148

Item code 790916
Price (euro) _____

Control board 462 DF
Technical specifications page 150

Item code 790918
Price (euro) _____

Enclosure mod. E
for control boards

Item code 720119
Price (euro) _____

Enclosure mod. LM
for control boards

Item code 720309
Price (euro) _____

SPECIFIC ACCESSORIES



Carrier case with release system
(Patented)

Item code 490065
Price (euro) _____



NEW Carrier case in stainless steel
with release system (Patented)

Item code 490110
Price (euro) _____

Release lock with customised key
from no. 1 to no. 36

Item code 712501001 to 712501036
Price (euro) _____

140° opening kit

Item code 390612
Price (euro) _____

Magnetic travel limit kit

Item code 490126
Price (euro) _____

NEW 180° opening kit

Item code 490111
Price (euro) _____

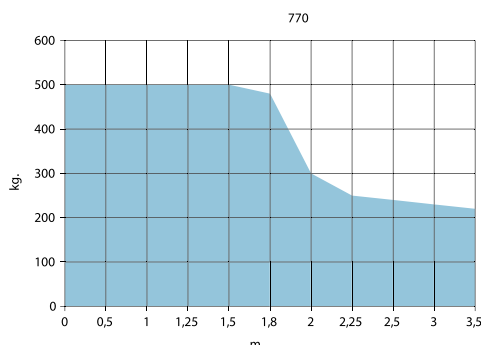
Internal opening mechanical stop

Item code 722121
Price (euro) _____

Internal closing mechanical stop

Item code 722122
Price (euro) _____

Leaf m.	Kg
0	500
0,5	500
1	500
1,25	500
1,5	500
1,8	480
2	300
2,25	250
2,5	240
3	230
3,5	220



Notes

- **IMPORTANT:** the 770 operator must be supplied with a carrier case.
- You'll need the following for a two-leaf gate: two operators, two carrier cases and an control unit.
- For anti-crushing safety, use control units 452 MPS, 455 D or 462 DF, equipped with an electronic torque control device.
- **Gatecoder slow-down kit see page 161.**

OTHER ACCESSORIES



Key-operated push-buttons
page 185



Photocells and Columns
page 189



Safety devices
page 191



Flashing lamps
page 193



Transmitters
page 182



Various accessories
page 194