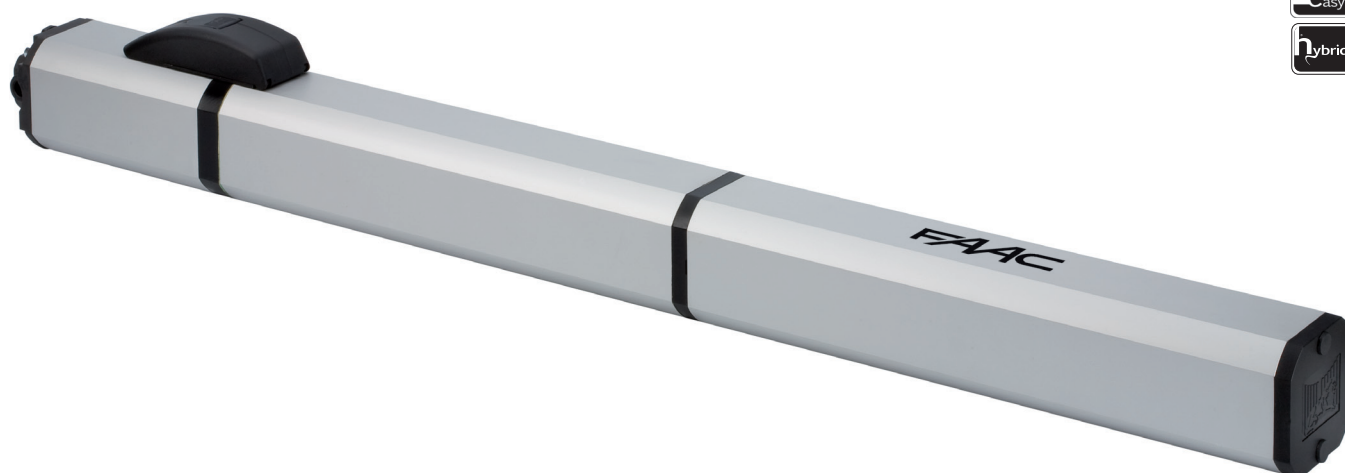


Hydraulic operator

for residential and condominium swing-leaf gates with single leaf
max. width of 3 m (SB) and 2 m (CBAC)



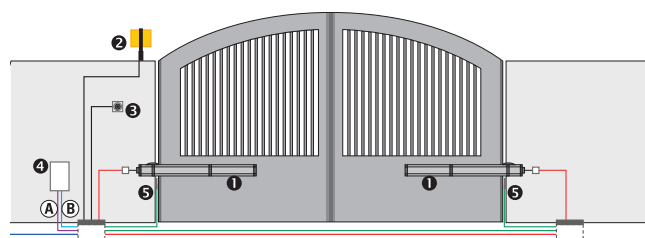
- Hybrid technology
- Integrated encoder with anti-crushing function and reverse upon detection of obstacle
- Useful stroke 311 mm
- New "multi-position" fixing bracket for non-welded applications
- Opening/Closing mechanical stops standard supplied

DIMENSIONS AND TECHNICAL SPECIFICATIONS S450H 24 Vdc

| | | | |
|--|------------|-------------------------------|----------------|
| Power supply | 230 Vac | Frequency of use | continuous use |
| Electric motor | 24 Vdc | Operating ambient temperature | -20°C to +55°C |
| Power | 60 W | Weight | 6,5 kg |
| Current | 7 A | Type of oil | FAAC HP OIL |
| Max. thrust* | >500 da N | Protection class | IP 55 |
| Rod stroke | 311 mm | Dimensions (L x D x H) in mm | 1113x85x119 |
| Max. rod extension speed (adjustable)* | >2,5 cm/s. | | |

(*) With board E124.

EXAMPLE OF A TYPICAL INSTALLATION



| Ref | Q.ty | Description | Item code |
|-----|------|--|--------------|
| 1 | 2 | Operator S450H | 104100 |
| 4 | 1 | Control unit EO24S with enclosure | 790286 |
| 5 | 1 | Frequency module XF 433 | 319006 |
| | 1 | Two-channel transmitter XT2 433 SLH LR | 787007 |
| 2 | 1 | FAACLIGHT flashing lamp 24 Vdc | 410014 |
| 5 | 1 | Pair of photocells XP15B | 785149 |
| | 1 | Key-operated push-button T10E | 401019001/36 |

■ (A) Low voltage cabling

- 1 cable 2x0.75
- 2 cables 2x0.75
- 1 cable 2x0.50
- 1 cable 3x0.75

■ (B) Power cabling (230V)

- 1 cable 2x1.5+T

N.B.: Cable sections in mm²

Notes

IMPORTANT: The configuration does not include the safety devices (i.e.: active or passive safety edges) that are to be determined according to the specific "risk analysis" of each installation (Ref.: UNI-EN 12445 and 12453 European Standards).

• The indicated price does not include the installation costs and the expenses for masonry, electrical and metalwork preparations.

S450H - 24 V dc

| Model | Use | | Control unit | Item code |
|------------|----------------------------|----------------------|--------------|-----------|
| | Single leaf max. width (m) | Frequency of use (%) | | |
| S450H CBAC | 2 | Continuous use | Not included | 104100 |
| S450H SB | 3 | Continuous use | Not included | 104101 |

The packages include: a hydraulic operator, installation accessories, a release key.

CONTROL UNITS



Control unit E 024S
Tech. specifications page 151

Item code 790286



Control unit E 124
Tech. specifications page 152

Item code 790284



Emergency battery kit XBAT 24
(not for E 124)

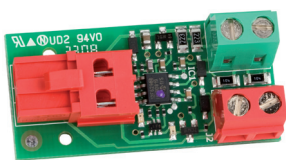
Item code 390923

SPECIFIC ACCESSORIES



Emergency battery support kit (*)
(only for E 124)

Item code 390926



BUS XIB interface
(if E024S board is used with non-BUS photocell)

Item code 790062



Receiving-transmitting module X-COM

Item code 787150



X-COM BOX module

Item code 790061



Release lock with customised key
from no. 1 to no. 36

Item code 712501001 to 712501036



Union for sheath RTA

Item code 710010

Notes

(*) The 2 standard Pb batteries are not supplied by FAAC. Voltage/current of 12V/4Ah needed. Dimensions: 90x70x108mm

OTHER ACCESSORIES



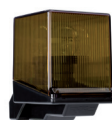
Key-operated push-buttons
page 159



Photocells and Columns
page 163



Safety devices
page 166



Flashing lamps
page 167



Transmitters
page 156



Various accessories
page 168