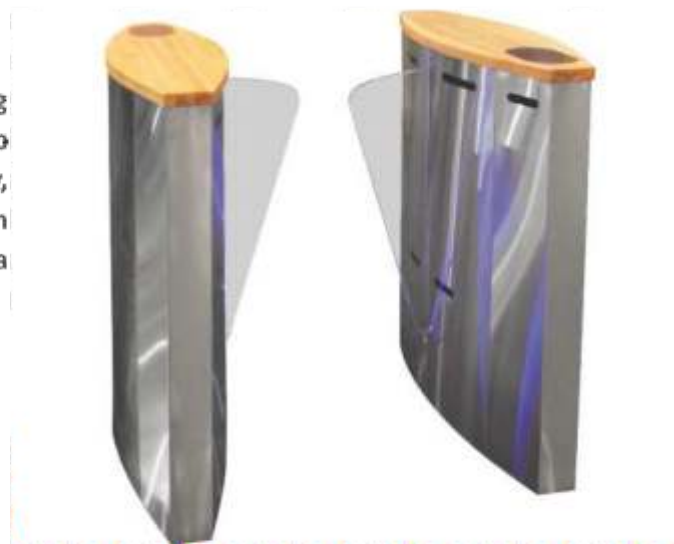


SB-202

Neptune-Tiso Flap barrier SB-202 is the most compact and laconic flap barrier of flap Series. The Flap dimensions, housing materials as well as roundels make the flap look gentle and light. The flap's simplicity, speed and principle of operation along with the contemporary appearance make it a perfect solution for any sites.



30
cm



0.8
m



500
mm

WITH ITS TOP LID VARIATIONS - AMID WHICH ARE WOOD, STEEL

AND EVEN STONE WILL FIT ANY INTERIOR EFFORTLESSLY

Controlled by:

- access control system;
 - manual control
- When power goes OFF both directions are free.

Electrical Specifications:

- Voltage:
 - from the AC (100-240)V, 50/60Hz;
 - from a DC source 12 V
- Maximum power consumption 155 W per pass;
- Degree of protection according to GOST 14254-96 - IP41-54

Technical Specifications:

Length	Single pass - 1080 mm Two-pass - 1870 mm
Width	1000 mm
Height	992 mm
Weight, not more	Single pass - 202 kg Two-pass - 324 kg

